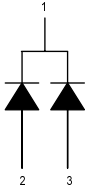


# SOT23 HIGH SPEED SWITCHING DIODE PAIR COMMON CATHODE

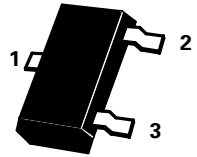
ISSUE 2 – JANUARY 1995

## BAV74

### PIN CONFIGURATION



PARTMARKING DETAIL  
BAV74 – JA



SOT23

### ABSOLUTE MAXIMUM RATINGS.

PARAMETER	SYMBOL	VALUE	UNIT
Continuous Reverse Voltage	$V_R$	50	V
Average Output Rectified Current ( $t_{av} = 10ms$ )	$I_o$	100	mA
Continuous Forward Current	$I_F$	150	mA
Peak Forward Current ( $t = 15ms$ )	$I_{FM}$	200	mA
Forward Surge Current ( $t=1\mu s$ )	$I_{FS}$	1000	mA
Power Dissipation at $T_{amb}=25^\circ C$	$P_{tot}$	330	mW
Operating and Storage Temperature Range	$T_j; T_{stg}$	-55 to +150	$^\circ C$

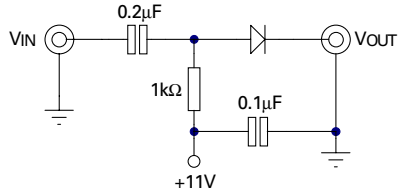
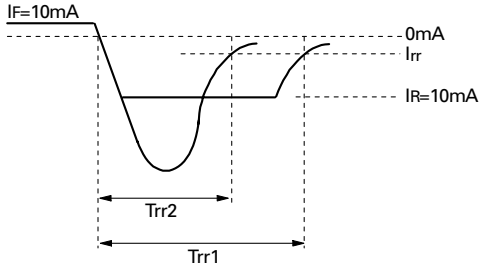
### ELECTRICAL CHARACTERISTICS (at $T_{amb} = 25^\circ C$ unless otherwise stated).

PARAMETER	SYMBOL	MIN.	MAX.	UNIT	CONDITIONS.
Breakdown Voltage	$V_{BR}$	51		V	$I_R = 5\mu A$
Forward Voltage	$V_F$		1.0	V	$I_F = 100mA$
Reverse current	$I_R$		0.1 100	$\mu A$ $\mu A$	$V_R = 50V$ $V_R = 50V, T_{amb} = 125^\circ C$
Capacitance	$C_o$		2.0	pF	$V_R = 0$
Reverse Recovery Time	$t_{rr}$		4 2	ns ns	$I_F = I_R = 10mA, I_{RR} = 1mA$ $I_F = 10mA, V_R = 6V,$ $R_L = 100\Omega$

Spice parameter data is available upon request for this device

# BAV74

## Circuit For Measuring Switching Time

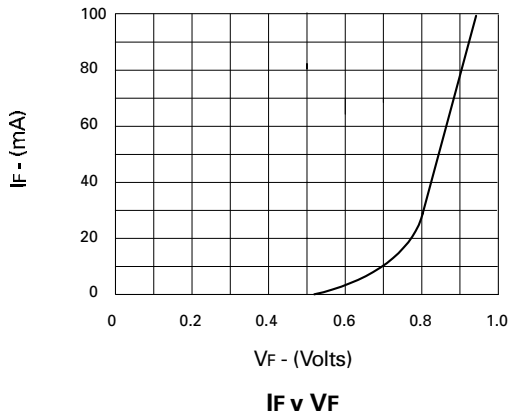


Pulse is supplied by a generator with the following characteristics:

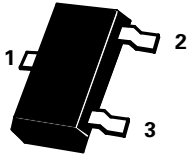
Output impedance =  $50\Omega$   
 Rise time  $\leq 0.5\text{ns}$   
 Pulse width =  $100\text{ns}$

Output is monitored on a sampling oscilloscope with the following characteristics:

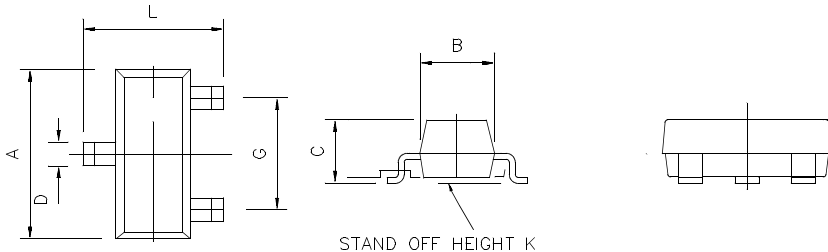
Input impedance =  $50\Omega$   
 Rise time  $\leq 0.6\text{ns}$



# BAV74



DIM	Millimeters		Inches	
	Min	Max	Min	Max
A	2.67	3.05	0.105	0.120
B	1.20	1.40	0.047	0.055
C	-	1.10	-	0.043
D	0.37	0.53	0.0145	0.021
F	0.085	0.15	0.0033	0.0059
G	NOM 1.9		NOM 0.075	
K	0.01	0.10	0.0004	0.004
L	2.10	2.50	0.0825	0.0985
N	NOM 0.95		NOM 0.37	



Zetex plc.  
 Fields New Road, Chadderton, Oldham, OL9-8NP, United Kingdom.  
 Telephone: (44)161 622 4422 (Sales), (44)161 622 4444 (General Enquiries)  
 Fax: (44)161 622 4420

Zetex GmbH  
 Streitfeldstraße 19  
 D-81673 München  
 Germany  
 Telephone: (49) 89 45 49 49 0  
 Fax: (49) 89 45 49 49 49

Zetex Inc.  
 47 Mall Drive, Unit 4  
 Commack NY 11725  
 USA  
 Telephone: (516) 543-7100  
 Fax: (516) 864-7630

Zetex (Asia) Ltd.  
 3510 Metroplaza, Tower 2  
 Hing Fong Road,  
 Kwai Fong, Hong Kong  
 Telephone: (852) 26100 611  
 Fax: (852) 24250 494

These are supported by  
 agents and distributors in  
 major countries world-wide  
 ©Zetex plc 1997  
**Internet:**  
<http://www.zetex.com>

This publication is issued to provide outline information only which (unless agreed by the Company in writing) may not be used, applied or reproduced for any purpose or form part of any order or contract or be regarded as a representation relating to the products or services concerned. The Company reserves the right to alter without notice the specification, design, price or conditions of supply of any product or service.